



MC.NET

Advanced Software for ERWEKA Hardness Testers



ERWEKA

MC.NET - networked hardness measurement

One database, many devices

The MC.NET software is our innovative solution for external control of the ERWEKA hardness and combination testers. The software controls all from the compact TBH 325 and TBH 425 up to the fully automated EasyCheck and MultiCheck 5/5.1/6. With the power of MC.NET, data from multiple devices can be stored inside a single, network MS SQL database and easily accessed by multiple installations of MC.NET in the same network. Thanks to its advanced Audit Trail features, the data integrity is ensured.

With the help of MC.NET, the user can easily qualify devices, create and use methods and analyze test results – all with full 21 CFR part 11 conformity and extensive Audit Trail.

All features within MC.NET are optimized on one thing: saving time while maintaining full documentation.



MC.NET Software

- Full device control
- Automated testing
- Unlimited storage space
- Methods, reports & Audit Trail
- Network database



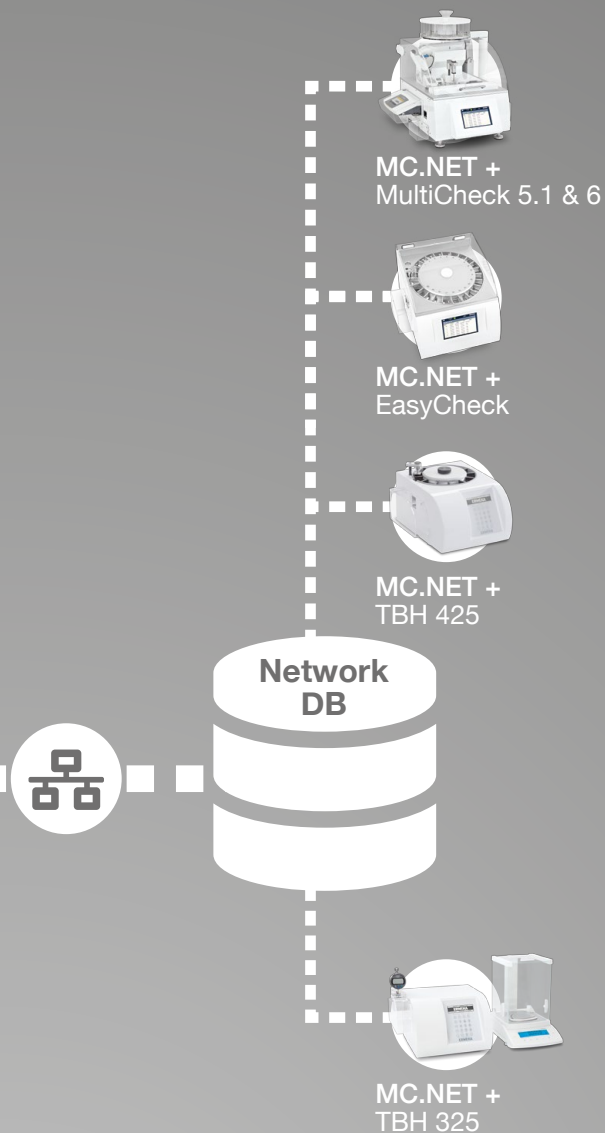
Compatible with ERWEKA hardness tester



MS SQL database (local or network)



Easy to use



Local or network data

All data (device settings, batch information, methods and more) can be stored either locally or in a network database (MS SQL). The network configuration allows access to all data from any MC.NET powered devices, therefore reducing the need to create base data for many devices to just once.

Efficient method management

As soon as a method is created with all its information, it can be easily used as template for future methods. Just select the suitable template and use it. In this way, creating a larger number of methods is efficient and comfortable.

Flexible user management

Users can be easily created, edited and specific rights can be quickly allocated. This ensures that only authorized personell has access to specific functions. The user management also works in conjunction with the network database, sharing users across all MC.NET network installations and has support for Active Directory.

MC.NET Audit Trail

With the audit trail (tracking full four Ws - Who? What? When? and Why?), tracking changes across all devices is as easy as it gets. The Audit Trail viewer simplifies filtering and searching with an easy to use interface. It is 100% 21 CFR part 11 conform and offers full data integrity .

Electronic signature

Thanks to the electronic signature, handwritten approval of tests is not necessary anymore. The full process from creation over audit up to approval of the test results is fully integrated into the software.

TBH to MultiCheck 6

Full control of the whole device

With MC.NET, users can fully control ERWEKA's physical hardness tester with an external computer.

With its user-friendly interface, new methods can be quickly created and tests can be started and later analyzed in no time. This makes MC.NET the perfect companion to our physical tester.

The software supports all devices, from the manual TBH 325 to the semi-automatic TBH 425 up to the fully automated EasyCheck and MultiCheck 5/5.1/6.

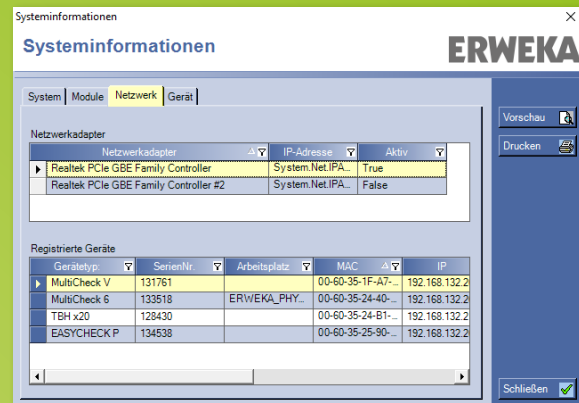


User-friendly with Extensive functions

Central datamanagement

With MC.NET, the user manages all data used for and by the hardness tester, in either a local or a central MS SQL database.

Products, methods, users and testresults can be shared across several devices by the central database, removing the need to maintain the same data repeatedly.



Electronic signature

The electronic signature feature allows the user to fully digitalize the process of audit and release of test results, right inside the software. This removes the need for manual signing a printed document.

The report can be digitally created, audited and released by entering the users login data. With the vastly configurable user rights, the software ensures that only authorized users can run the specific steps of the process.

After each step, MC.NET creates a report with a unique protocol number. Simultaneously, all results are stored in the database and can be easily viewed at all times.



Tracking all changes – MC.NET Audit Trail with full data integrity

The audit trail inside MC.NET is conform to regulatory rules (e.g. 21 CFR Part 11) and tracks all activities of the software, logging change, user, time and (optional) reason (What, who, when, why). For quick completion of the audit trail dialog, reasons can be either predefined and then selected or entered freely.

With the Audit Trail Viewer, users can quickly and conveniently search and filter all changes to the system, never losing overview of the system.



Conform to all regulations



Documentation and tracking of all activities



Comfortable search and filter functions

The screenshot displays the ERWEKA Audit Trail application. The main window shows a list of activities with columns for Nr., Datum, Zeit (UTC), Aktion, Datentyp, Benutzer, and Kommentar. A detailed view of entry 415 is shown below, including a table for 'Version' and a list of 'Audittrail Kommentare'.

Nr.	Datum	Zeit (UTC)	Aktion	Datentyp	Benutzer	Kommentar
415	07.11.20...	08:42:13 +01:00	(99) New soft...		Internal	auto
416	07.11.20...	08:42:14 +01:00	(10) Anmeldu...		admin	auto
417	07.11.20...	08:42:32 +01:00	(2) Daten be...	Registeredinstruments	admin	Systemeinstellung
418	07.11.20...	08:44:15 +01:00	(2) Daten be...	Registeredinstruments	admin	Systemeinstellung
419	07.11.20...	08:44:49 +01:00	(70) Program...		admin	auto
420	07.11.20...	14:01:19 +01:00	(10) Anmeldu...		admin	auto
421	07.11.20...	14:01:55 +01:00	(2) Daten be...	Settings	admin	disabled
422	07.11.20...	14:02:08 +01:00	(70) Daten be...	Registeredinstruments	admin	Systemeinstellung
423	07.11.20...	14:02:08 +01:00	Audittrail Kommentar auswählen			
424	07.11.20...	14:02:08 +01:00				
425	07.11.20...	14:02:08 +01:00				
426	07.11.20...	14:02:08 +01:00				
427	07.11.20...	14:02:08 +01:00				

Audittrail Kommentar	Bemerkungen
Falscheingabe	
Routinemäßige Kalibrierung	
Systemeinstellung	
Testkommentar	

Individueller Text:

Full documentation of all activities

Audit trail prompt with text box for individual reason

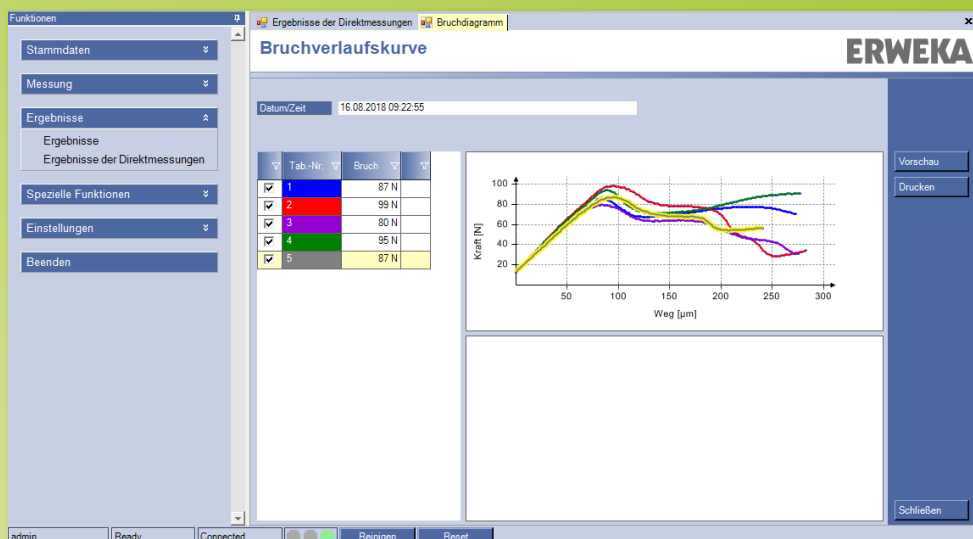
Quality control on the highest level – MC.NET hardness diagramm

The optional hardness diagramm shows the force-path progress of the tablet hardness, enabling easy visual confirmation of the tablet hardness measurement.

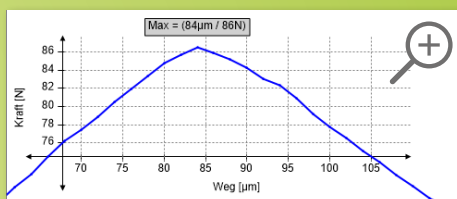
The graphical results of the hardness diagramm assist with derivation of a method as well as with selection of test parameters. The function also serves as quality control feature, because expected results can be easily compared to the actual diagramm.

After completion of the tests, up to 20 hardness diagrams can be compared to each other. The zoom function and different colors of the selected diagrams makes rating of the results as easy as never before.

The hardness diagrams can be saved and printed. Single data points can be exported as XML file.



The hardness diagrams are distinguished by colour.



The zoom function allows precise review of the diagramm.



Contact

Are you curious and want to find out more?
Head over to our website and download our product brochures,
watch videos of our equipment in action or find the ERWEKA
dealer of your country.



E-Mail: sales@erweka.com
Tel.: +49 6103 92426-200
Fax: +49 6103 92426-999



support@erweka.com



www.erweka.com



spareparts@erweka.com



www.facebook.com/erweka.gmbh

ERWEKA GmbH

Pittlerstr. 45
63225 Langen
Germany

E-Mail: sales@erweka.com
Telefon: +49 6103 92426-200
Fax: +49 6103 92426-999

Technical specifications of products described are
stated without warranty and subject to change at
any time without further notice. **v.1.0.3.20**

ERWEKA