



# Physicals Guide

Our broad range of physical testers



**ERWEKA**

# Our physical testers program

ERWEKA offers a broad range of physical testers.



## Tablet hardness testers

We offer a wide range of tablet hardness testers - from the manual TBH 125 up to the fully automated testers EasyCheck and MultiCheck 6.

TBH 125 .....	4
TBH 325 .....	4
TBH 425 .....	5
AutoCal 2.0 .....	5
EasyCheck .....	6
MultiCheck 6 .....	8



## Disintegration testers

To analyse disintegration time, we offer manual and automated disintegration testers.

ZT light Series .....	10
ZT 320 Series .....	11
ZT 730 Series .....	12



## Tapped density testers

The SVM II and its accompanying noisebox are the perfect solution for tapped density testing.

SVM II .....	13
--------------	----



## Friability/Abrasion testers

The TAR II is our friability and abrasion tester.

TAR II .....	14
--------------	----



**Vacuum leak testers**

The VDT/S is our vacuum leak tester.

VDT/S ..... 15



**Granulate flow testers**

For testing of flow characteristics of granules and powders.

GTL..... 16  
 GT & GTB ..... 16  
 SMG ..... 17



**Suppository testers**

We offer a variety of suppository testers for testing of suppository disintegration, hardness, melting point and penetration testing.

SSP..... 18  
 PM 30 ..... 18  
 ST 35 ..... 19  
 SBT 2..... 19

**Contact**

Do you have further questions?  
 We are here to answer them for you.

Contact..... 20



# Manual tablet hardness testers

## TBH 125

Dual-mode tester with robust design and basic functions.

The ERWEKA TBH 125 tablet hardness tester is the ERWEKA entry-level tablet hardness and combination tester. The device is perfectly suited for quick and manual testing of up to 99 samples.

Depending on the device model, automatic measurement can be taken for tablet hardness and thickness (optional), diameter (for round tablets) or length (for oblongs). The integrated electronic measurement cell ensures highest accuracy for precise measurement results. Due to the USB printer interface the results can be printed directly.



100%

100%  
USP / EP / JP  
compliant



Setting of test speed  
(0.5 - 3.00 mm/sec.)



Adjustment of  
force increase  
(10 - 200 N/sec.)



Collection  
container for  
broken samples

## TBH 325

Manual tester with product memory.

The ERWEKA TBH 325, part of manual hardness and combination tester product range, features an integrated product memory for up to 50 products.

The TBH 325 provides various documentation and evaluation possibilities. Depending on the device model, automatic measurement can be taken for tablet hardness and thickness (optional), diameter (for round tablets) or length (for oblongs) and weight (optional). Up to 100 tablets can be precisely tested in one run.



100%

100%  
USP / EP / JP  
compliant



Adjustable breaks  
between the  
test runs



Adjustment of  
force increase  
(10 - 200 N/sec.)



LAN / USB  
interface

# Semi-automated tablet hardness tester

## TBH 425

The ERWEKA TBH 425 is a semi-automatic tablet hardness and combination tester for measuring of up to ten samples. The samples are automatically transported to the test station by a star-shaped rotary magazine. Depending on the device model, automatic measurement can be taken for tablet hardness and thickness (optional), diameter (for round tablets) or length (for oblongs). In combination with the optional balance the weight can also be determined.

In addition, the rotary magazine enables full visual inspection of the test processes at all times. Up to 100 tablets can be precisely tested in one run and the acquired data can be documented and evaluated in a variety of ways. Therefore the TBH 425 can be connected to a printer via the USB printer interface or directly integrated into a computer network via the Ethernet LAN interface.

Via a numeric keypad with alphanumeric subfunction the nominal hardness values in combination with three individual tolerances can be entered for up to 50 products and afterwards recalled for testing.

In addition, the unit generates a calibration print-out outlining individual calibration data and further information (service date and time, serial number).



100%  
USP / EP / JP  
compliant



Star feeder  
magazine



Setting of test speed  
(0.5 - 3.00 mm/sec.)



Adjustment of  
force increase  
(10 - 200 N/sec.)



# Calibration instrument for hardness testers

## AutoCal 2.0

The certified AutoCal 2.0 system is an electrical device for calibrating the integrated tablet hardness measuring system. Not requiring any measurement weights, AutoCal 2.0 is simply connected

to the USB port and ensures the adjustment/calibration either in conjunction with the MC.NET software or the calibration function integrated into the firmware.



# Fully automated tablet hardness tester

## EasyCheck

Fully automatic hardness testing as easy as never before

EasyCheck is the new entry-level tablet combination tester that tests for up to 5 parameters. The compact system is 100 % compliant with all common pharmacopoeias, and excels, above all, through innovative design features and a clear focus on essentials: Its integrated load cell automatically weighs samples, the Oblong Slider automatically brings evenly shaped oblongs into perfect alignment and the intuitive touch display allows storage of up to 100 products/methods. EasyCheck offers a test memory for up to 1 million test results directly on the unit – enabling results from earlier tests to be re-called whenever required.

In addition, extensive integrated calibration functions and the Audit Trail Light feature (logging What, Who, When) ensures that you have access to precise test results and extensive documentation of all working steps - highest user convenience combined with powerful functionality. Optionally the Easy Check offers a data export function to CSV and XML format.

EasyCheck is your entry-level device for easy, fully automatic and highly precise testing for up to 5 parameters!

-  100% USP / EP / JP compliant
-  Oblong Slider
-  Integrated weight measurement
-  Test memory, Audit Trail Light & data export
-  Star feeder magazine
-  AutoCal 2.0 calibration possible

	EasyCheck Basic	EasyCheck Pro
Main application	Round tablets, evenly shaped oblongs	Round tablets, evenly shaped oblongs
Measurement values	4 parameters: Weight, thickness, diameter/length, hardness	5 parameters: Weight, thickness, diameter/length, width, hardness
Touch display	✓	✓
Oblong Slider®	–	✓
Memory for up to 1 million test results	optional	optional
Audit Trail Light (21 CFR Part 11 compliant)	optional	optional
Data export in CSV and XML format	optional	optional



07.06.2015 11:40 1.29 06.05.15 ERWEKA

Result values		Data		Print	Back
Values	Statistics	Thickness	Diameter	Hardness	
No	Weight	Thickness	Diameter	Hardness	
1	219.4 mg	3.67 mm	6.00 mm	70 N	
2	219.1 mg	3.59 mm	6.00 mm	71 N	
3	220.6 mg	3.62 mm	6.00 mm	73 N	
4	219.6 mg	3.64 mm	6.00 mm	72 N	
5	219.4 mg	3.61 mm	6.00 mm	73 N	
6	218.3 mg	3.61 mm	6.00 mm	70 N	
7	220.2 mg	3.62 mm	6.00 mm	70 N	





# Fully automated tablet hardness tester

## MultiCheck 6

The MultiCheck 6 offers ease of operation, maximum efficiency and enhanced operator convenience. This fully automatic combination tester is packed with innovative technology: The intuitive touch display with integrated MC.NET software functionality, the capsule weight measurement system and the patented Oblong Navigator® are only some of the innovative new features. In addition, the new MultiCheck 6 provides an unsurpassed low noise level and cleanest operation in its class.

Extensive integrated calibration functions and the Audit Trail Light feature (logging What, Who, When) ensures access to precise test results and extensive documentation of all working steps – highest user convenience combined with powerful functionality. Proven features have been retained: MultiCheck 6 can be equipped with the 12 batch magazine and test up to five tablet parameters, fully automated and 100 % compliant with all pharmacopoeias around the world: A true all-rounder.

 100%  
USP/EP/JP  
compliant

 Oblong  
Navigator®

 integrated weight  
measurement

 Touch display

 AutoCal 2.0  
calibration  
possible

	MultiCheck 6 Standard	MultiCheck 6 Allrounder
Main application	Round tablets, dragées, evenly shaped oblongs	Round tablets, dragées, evenly shaped oblongs, odd-shaped oblongs
Measurement values	4 parameters Weight, thickness, diameter, hardness	5 parameters Weight, thickness, dia- meter, width, hardness
Touch display	✓	✓
Separation drum	✓	✓
Capsule measurement	✓	✓
Alignment threshold (fixed)	-	-
Alignment threshold (electronic, adjustable)	✓	✓
Slot for oblongs	✓	not required
Positioning arm for oblongs	✓	✓
Oblong Navigator®	-	✓

## Compact disintegration testing – ZT 120 light series

The ERWEKA ZT 120 light series is the perfect entry-level disintegration tester with one or two single-motor driven USP/EP/JP compliant test stations. The compact unit of our light series is equipped with an integrated flow-through heater and a moulded one-piece PET water bath (no leaking/breaking, easy to clean) with cover.

The ZT 120 light series can be easily operated via a membrane keypad. Defined test run parameters such as run time and water bath temperature are entered with symbol keys and the actual values are then shown on large and bright LED displays. The run-time counter automatically starts as soon as the basket rack assembly is lowered into the test media.

100%

100%  
USP/EP/JP  
compliant



1 or 2  
test stations



Easy control via a  
large LED display



Compact  
entry-level  
device



# Asynchronous disintegration tester – ZT 320 series

The test stations of our ZT 320 series are driven individually. Each test station is controlled by its own keypad. After programming the required test run-time, the basket rack assembly with its loaded samples is automatically lowered into the media. On completion of the preset run-time or when the stop button is pressed, the basket rack is raised from the media to prevent further disintegration of the samples (optional).

100%

100%  
USP/EP/JP  
compliant



Individually  
driven basket  
racks



# Automated disintegration tester with touch display

## ZT 730 Series with AirBasket

The ERWEKA ZT 730 Series with cable-free AirBasket automatically determines the disintegration time of samples by using a unique system of magnets and sensors. The ZT 730 is available with one (ZT 731) or two (ZT 732) individually driven test stations and is equipped with an integrated flow-through heater.

Its newly designed, cable-free AirBasket makes disintegration testing with automatic determination of the disintegration time as easy and fast as possible. Its electronics compartment is sealed, making it dishwasher proof. It's sensors are also highly durable and enable the AirBasket to be used in acidic media. AirBasket is available as type A basket with 6 test tubes for standard tablets, or type B basket with 3 test tubes for bigger tablets (according to USP/EP standards).

The reliable waterbath technology utilizes the thermal inertia of water to create a steady temperature for testing according to USP/EP standards. Its temperature sensor PT 100 allows constant control of the water bath temperature. The ZT 730 series is controlled through an intuitive 7" touch-screen and is capable of storing and retrieving up to 200 products/methods with results and parameters.

100%

100%  
USP / EP / JP  
compliant



Intuitive touch  
interface



Automated  
detection of  
disintegration



Cable-free  
AirBasket



LAN/USB  
data export



Type A and Type B  
AirBaskets available.

# Tapped Density Tester

## SVM II

### 5-in-1 tapped density tester






The SVM II is our latest generation of tapped density tester. With unprecedented flexibility and intelligent features, it makes tapped density testing as easy and reliable as never before.

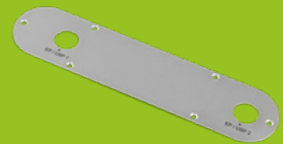
The 7" high resolution touch display with a modern user interface focuses the user on the most important task the new SVM II has to fulfill - 100% USP/EP compliant tapped density testing. With the automatic calculation features of the TestAssist, the user is guided step-by-step through the testing process as quickly as possible. It also automatically calculates the Hausner Ratio and compressibility index and prints the reports after every test.

In addition to its ease of use, the SVM II is the most flexible tapped density tester we ever built. The newly designed SwitchPlate system enables 5 different versions of the SVM II, with both USP 1 and USP 2 in either one or two test station configurations or a combination with both methods. And the best part - they can also be upgraded at a later time point!

SVM II also supports a variety of method and norms: From USP 1 and USP 2 to ASTM B527-15 and DIN EN ISO 787-11:1995 - with the SVM II, users are on the safe side of valid and conform tapped density testing.



-  100% USP methods 1, 2, ASTM B527-15 and DIN ISO 787-11:1995
-  Upgradeable at any time
-  Intuitive touch interface
-  One or two test stations
-  One base SVM II - 5 versions possible



Noise box for 25 db(a) noise reduction available\*

\*measured from a standard distance of 0.65 m

# Friability / Abrasion tester

## TAR II

100 % USP/EP/JP compliant friability/abrasion tester



One or two test stations



Intuitive touch interface



TestAssist with automatic calculation



Intelligent balance connection with data transfer



Upgradeable at any time

The TAR II is the next step in intelligent, upgradeable friability & abrasion testing according to USP/EP/JP. Its unprecedented flexibility and intelligent features such as TestAssist and direct balance data transfer make TAR II the most advanced friability tester on the market.

The 7" high resolution touch display with a modern user interface focuses the user on the most important task the new TAR II has to fulfill - 100% USP/EP compliant friability testing. With the automatic calculation features of the TestAssist, the user is guided step-by-step through the testing process as quickly as possible and with its advanced balance connection feature, data is directly transmitted and calculated.

In addition to its ease of use, the TAR II is the most flexible friability tester we ever built. TAR II can be configured with one or two test stations and the optional intelligent balance feature - and the best part - all can also be upgraded at a later time point! A stand for the 10° position required by USP/EP is also included.



# Vacuum leak tester for blisters and other packaging forms







## VDT/S

The VDT/S is a vacuum leak tester for blisters and other packaging forms. The maximum vacuum (absolute pressure range up to 100 mbar) and the vacuum hold time before release can be easily set via the symbol keypad. The actual vacuum is continuously displayed on the LED display. Test run parameters such as actual/set vacuum value and hold time can be simply documented via a USB interface or a connected printer.

### Leak testing

For checking the density the ERWEKA VDT/S performs a methylene blue dye test, which is divided into several phases. During the pressure maintenance phase the blisters are exposed to a vacuum, which is generated in the vacuum container. Afterwards the container is ventilated. In the subsequent penetration process the blister is resting in the methylene blue solution, so that the solution can suck into any imperfectly sealed packaging.

The integrated vacuum pump can be recalibrated using the optional validation kit which includes a vacuummeter, type DVR.

-  100% USP compliant
-  Easy to use
-  LED display
-  USB interface



# Granulate flow tester

## GTL



The GTL is the basic ERWEKA unit for testing flow characteristics of powders and granulates, to ensure that accurate dosing is maintained.

It supports the determination of the flow time of a pre-weight sample (DAB 10) and the determination of the flow time of a pre-defined sample volume.

The GTL is handled by numeric membrane keys and the results are displayed by the illuminated LC display. As standard, the unit is delivered with a stainless steel hopper (200 ml) and three stainless steel outlet nozzles (10/15/25 mm) which can be exchanged by a quick coupling. Additional stainless steel hoppers (100/480 ml) and outlet nozzles (6/8/11.3 mm) are available as options.



Granulate flow testing

## GT & GTB

On the GT a special balance is integrated into the unit to determine the flow time of a sample weight or pre-specified sample volume as well as the sample weight that falls within a specified flow time.

For easy comparison a graph according to List and Müller (mass/time) is calculated and displayed and/or printed.



Granulate flow testing





# Manual powder and granulate density testing

## SMG 697

The manual ERWEKA SMG 697 is the unit for the reproducible determination of apparent bulk density, which can be used with all free flowing powders or granulates. According to DIN ISO 697, the apparent bulk density is determined by measuring the mass of powder in a receiver of known dimension after filling from a funnel of a specified shape under specified conditions.

Included in the delivery is the apparatus SMG 697, operating instructions and a calibration certificate.



Granulate  
flow testing



# Suppository melting point tester

## SSP

The ERWEKA SSP measures the melting point of suppository samples. It consists of a graduated tube with an integrated test chamber made of glass. The sample to be tested is placed in the spiral shaped glass test basket inside the test chamber, which is surrounded by a water jacket.

The water inside the jacket can be simply heated by the optional circulation heater EST 2 and the melting point is determined by a stop watch.



Suppository melting point testing



# Suppository penetration tester

## PM 30



The ERWEKA PM 30 measures the softening time of suppositories. Suppositories must disintegrate, dissolve or melt at body temperature in order to release their active ingredients to the body. ERWEKA offers a version for USP method A and method B.

The PM 30 penetration tester (compliant to EP, Apparatus A) and the PM 3 (acc. to EP, App. B) have been designed to carry out reproducible measurements regarding the softening time of suppositories at predetermined temperatures. The construction of the tester makes visual observation of the melting characteristics extremely simple. In total, the unit comprises of three test stations.



Suppository penetration testing

# Suppository disintegration tester

## ST 35



The ERWEKA suppository disintegration tester ST 35 comes with three turning test stations, each located inside a four liter glass vessel with an optional magnetic stirrer. Additionally, the unit contains a thermostatically heated water bath, in which the test stations are placed.

The test stations are automatically turned 180° in adjustable intervals. The ST 35 features an integrated flow-through heating system (accuracy  $\pm 0.2^\circ\text{C}$ ) and an internal temperature sensor for temperature display.

Test time and nominal bath temperature are easily entered via the membrane keys. Current test time as well as actual water temperature are shown on a LED display. On request, an alarm may be selected to sound upon completion of the preset test time. Due to the width of the ST 35, the test stations can be easily separated to facilitate the cleaning process.



Suppository disintegration testing

# Suppository hardness tester

## SBT 2

The suppository hardness tester (type SBT 2) consists of an electrically heated chamber with an integrated sample holder and a number of interchangeable plastic inserts to accept various sized suppositories. Once up to the desired temperature, the hardness is checked by weights (included in the standard delivery range) which are gradually placed on the device until the suppository collapses under the load of the added weights.

The results are expressed in terms of total weight required to bring about the collapse of the suppository.



Suppository hardness testing by weight





## Contact

Are you curious and want to find out more?  
Head over to our website and download our product brochures,  
watch videos of our equipment in action or find the ERWEKA  
dealer of your country.



E-Mail: [sales@erweka.com](mailto:sales@erweka.com)  
Tel.: +49 6103 92426-200  
Fax: +49 6103 92426-999



[support@erweka.com](mailto:support@erweka.com)



[www.erweka.com](http://www.erweka.com)



[spareparts@erweka.com](mailto:spareparts@erweka.com)



[www.facebook.com/erweka.gmbh](http://www.facebook.com/erweka.gmbh)

### ERWEKA GmbH

Pittlerstr. 45  
63225 Langen  
Germany

E-Mail: [sales@erweka.com](mailto:sales@erweka.com)  
Phone: +49 6103 92426-200  
Fax: +49 6103 92426-999

Technical specifications of products described are  
stated without warranty and subject to change at  
any time without further notice. **v.2.8.2.23**

# ERWEKA